



LOGOS VIRTUAL PLAN

Grades 6-12 ~ St. Louis, Missouri



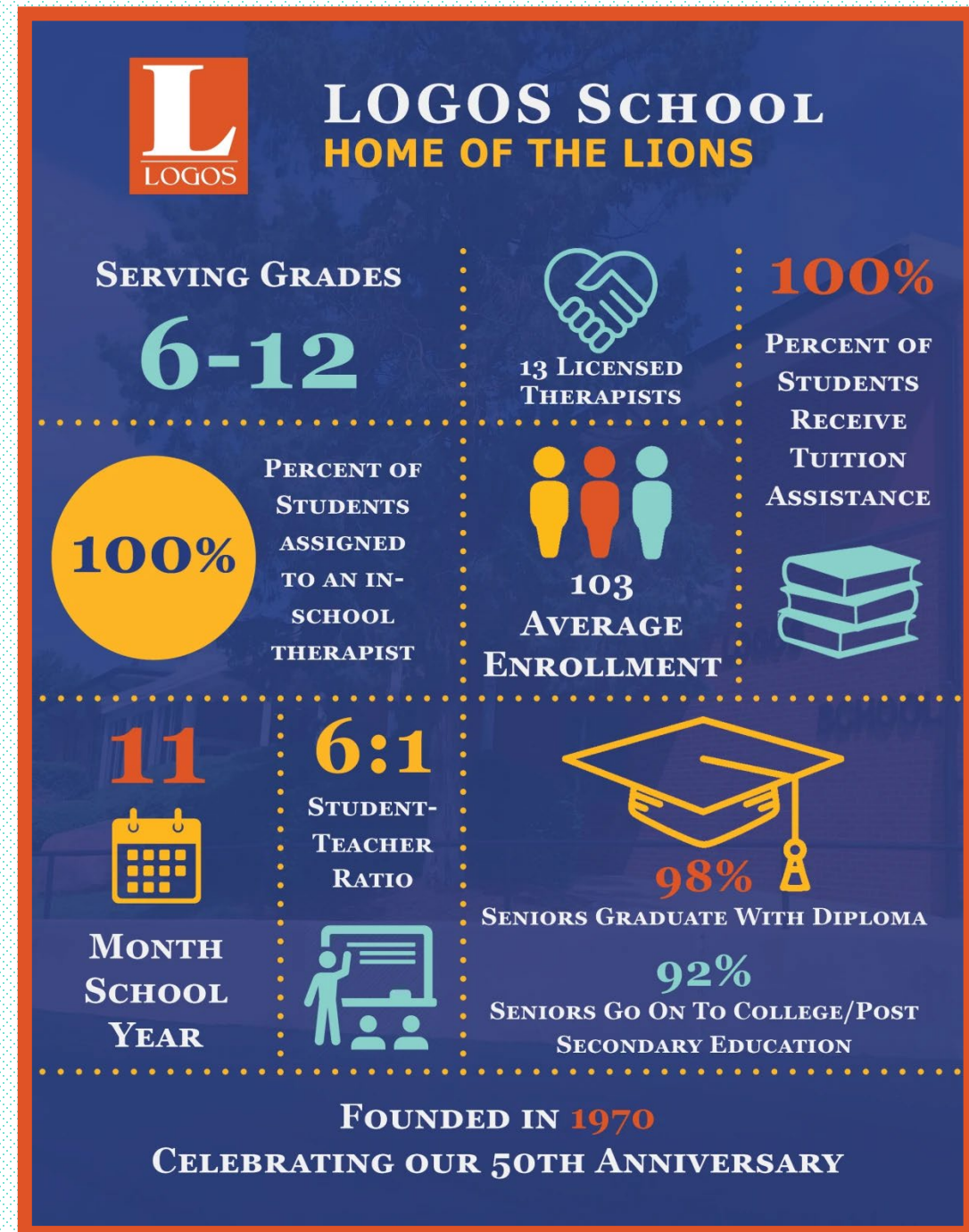
ABOUT LOGOS

LOGOS is a therapeutic school specializing in behavioral therapy for adolescents. Students receive personalized academic instruction combined with individual and group therapy to learn key life skills for success inside the classroom and beyond.

Why do families choose LOGOS?

We help students in crisis, families with adolescents struggling with any number of emotional challenges including:

- Anxiety
- Attachment Disorder
- Attention Deficit
- Hyperactivity Disorder
- Autism Spectrum Disorder
- Bipolar Disorder
- Depression
- Eating disorders
- Learning challenges
- Low self-esteem
- Obsessive Compulsive Disorder
- Oppositional Defiant Disorder
- Poor motivation
- Post Traumatic Stress Disorder
- Relationship challenges
- School refusal





LOGOS VIRTUAL LEARNING...

- Receive psychosocial and emotional support
- Strengthen their academic skills while earning credit
- Gain skills in resiliency, coping, self-advocacy, problem solving and socialization
- Experience new learning strategies while building life skills

LOGOS APPROACH

Therapeutics

Academics

Parental Support

At LOGOS, we reignite students' enthusiasm
for life and learning.



LOGOS APPROACH

Therapy

We have Master-level licensed therapists trained in various therapeutic interventions, including Dialectal Behavior Therapy (DBT) and Cognitive Behavioral Therapy (CBT) to foster social and emotional growth.

- Minimum 1 hour weekly individual therapy
- Minimum 2 hours of weekly group therapy
- Behavior modification skills
- Conflict mediation
- Coping/problem solving strategies
- Specialty student support groups

Academics

We go beyond the traditional classroom. Our highly qualified staff develop individual academic plans for each student and provide the attention needed for success.

- Accredited by Independent Schools of the Central States. (ISACS)
- Effective organizational/study skills
- Individualized academic planning
- State approved curriculum from DESE & ISBE
- Transitional services

Parental Involvement

Parents play a key role in their student's success. We engage parents and offer the support needed for education and emotional growth.

- Weekly contact with student's therapist
- Access to academic/therapeutic resources
- Individual communication with teachers
- Parent Committee

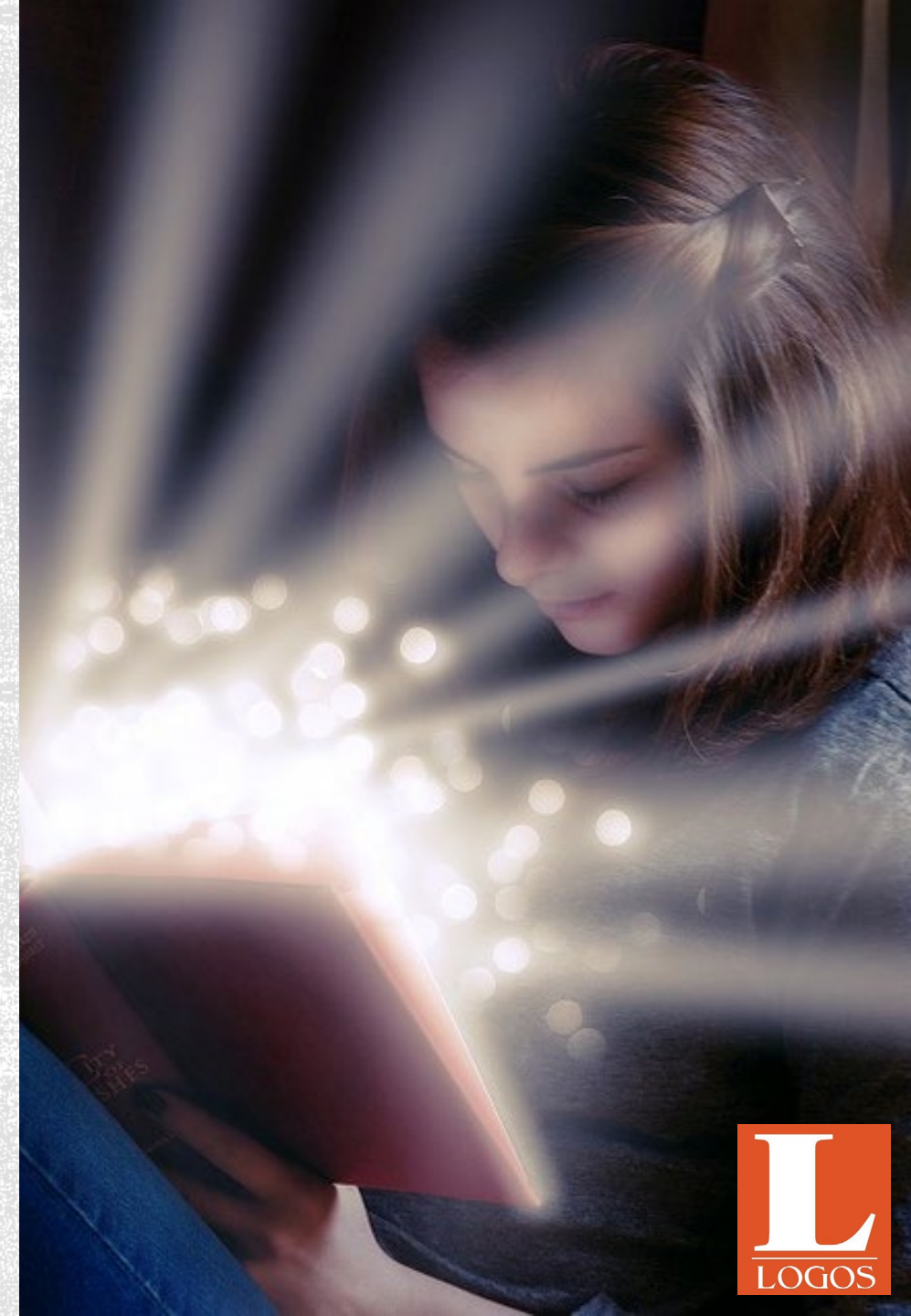
VIRTUAL THERAPY

Individual Therapy

- Students will receive 50 minutes of virtual individual therapy per week. Students can choose one of the following virtual platforms to engage with their therapist: Zoom, Facetime, Skype or Google Duo. Therapists will schedule time with students during the latter half of the instructional time as to not disrupt the first 30 minutes of teacher-led instructional time. Exceptions will be made if the student is struggling or in crisis.
- Sessions will focus on IEP-related therapeutic goals such as behavior intervention plans, working towards individualized treatment goals.

Group Therapy

- Group therapy sessions will be held twice a week during our Group/SEL class period. These sessions will be held using Zoom and will be focused on providing skill-related training, processing/resolving frustrations and providing social opportunities for students.





VIRTUAL ACADEMICS

For Term 1 (August 24, 2020 – October 16, 2020) academic instruction at LOGOS School will be provided virtually. Our academic program includes synchronous learning Monday through Thursday and time for individual meetings, office hours, 1:1 help and enrichment opportunities on Friday. Synchronous learning takes place in real time with a group of students and their teacher via Zoom or Google. Online instruction will be a combination of small group instruction as well as individualized assignments and projects.

When students have completed their work or a class they may log off. The teacher will be available for the entire block to provide assistance and answer any questions. To facilitate this remote learning, we will continue to make Samsung tablets and hotspots available to students who need these resources. Later this fall, we will transition to Chromebooks, and each LOGOS student will receive one. Other learning supplies and tools may also be provided to assist in student learning.

LOGOS' integrated student information system is Blackbaud, which has virtual learning capabilities built into it. All students and parents can login to Blackbaud to view assignments, daily expectations, online class bulletin boards, learning pages, teacher contact information and office hours.



LOGOS School

Term 1 Virtual Schedule

Middle School Block Schedule

Time*	Monday	Tuesday	Wednesday	Thursday	Friday
9:00-9:40	Spelling	Spelling	Spelling	Spelling	Meetings Therapy Office Hours Make-up Work Time Extra 1:1 Help Enrichment
9:40-10:20	Language Arts	Language Arts	Language Arts	Language Arts	
10:20-11:00	Reading	Reading	Reading	Reading	
11:00-11:50	Math	Math	Math	Math	
11:50-12:30	Lunch	Lunch	Lunch	Lunch	
12:30-1:10	Science	Science	Science	Science	
1:10-1:50	Social Studies	Social Studies	Social Studies	Social Studies	
1:50-2:30	P.E.	P.E.	P.E.	P.E.	
2:30-3:20	Group/Art	Group/Art	Group/Art	Group/Art	

MIDDLE SCHOOL ACADEMICS

All students will be provided 5 hours and 40 minutes of daily instruction designed by their teachers. For middle school students, each class will consist of 20 minutes of teacher-led discussion with the remaining time available to students to complete their work.





LOGOS School

Term 1 Virtual Schedule

High School Term 1 Block Schedule

Time	Monday	Tuesday	Wednesday	Thursday	Friday
9:00-10:20	1st Hour	4th Hour	1st Hour	4th Hour	Meetings Therapy Office Hours Make-up Work Time Extra 1:1 Help Enrichment
10:30-11:50	2nd Hour	5th Hour	2nd Hour	5th Hour	
11:50-12:30	Lunch	Lunch	Lunch	Lunch	
12:30-1:50	3rd Hour	6th Hour	3rd Hour	6th Hour	
2:00-3:20	Group/ SEL Class	Group/ SEL Class	Group/ SEL Class	Group/ SEL Class	

HIGH SCHOOL ACADEMICS

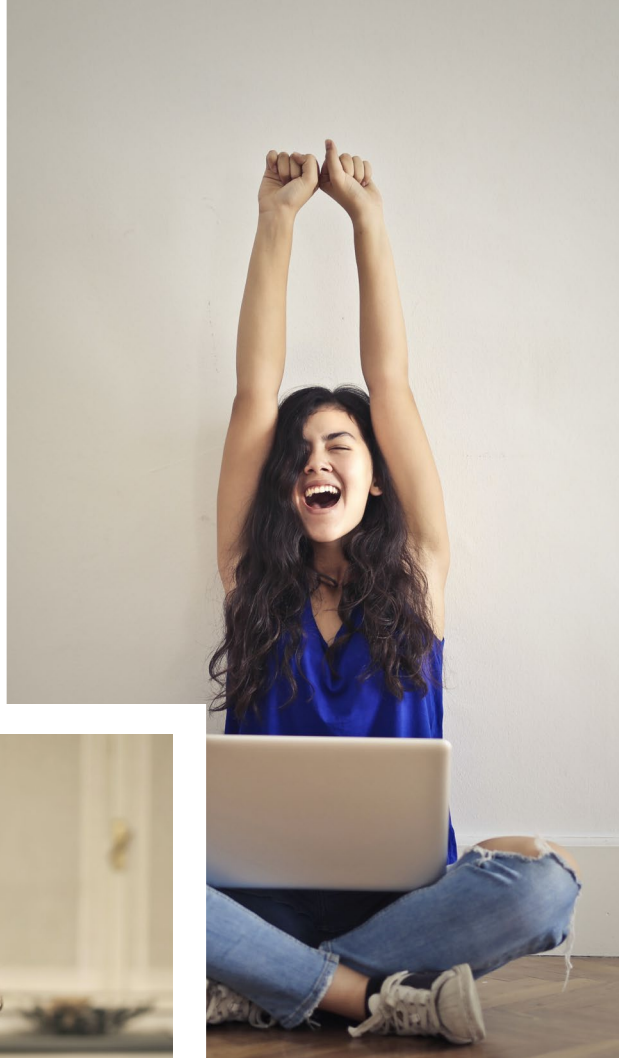
All students will be provided 5 hours and 40 minutes of daily instruction designed by their teachers. For high school students, each block will consist 30 minutes of teacher-led instruction and the remaining 50 minutes of each block will be spent in activities such as, but not limited to, group discussions, supplemental videos, practice work, 1:1 help, etc.

STUDENT TECHNOLOGY & SUPPORT TEAM

The Student Technology and Support Team is a multidisciplinary team of LOGOS Staff that are available to students and families to ensure they have the necessary tools and skills to access learning and therapy while virtual. They can provide in person support to struggling students and families. This can be in the form of crisis intervention, developing a family plan for virtual learning, and assist students and families in troubleshooting internet connectivity concerns.

- Assign Chromebooks to complete virtual assignments.
- Assist students with logging in and accessing Blackbaud.
- Assist students with virtual classes via Zoom and Google Classroom.





OUTREACH TEAM

The Outreach Team is a multidisciplinary team of LOGOS Staff that offers on-going support to students and families. The team is available to engage students who are struggling to participate, provide support during virtual classes and provide in-person crisis intervention. In addition, the team facilitates weekly parent support groups. The goal of this team is to proactively support students and families so they can be successful.

- Student and Parent Engagement
- In-Person Support
- Social Emotional Learning Lessons
- TASC Talks (Podcast)

CHOICE-BASED ART PROGRAM

Students are introduced to interactive online art platforms that allow students to document their learning, be creative and learn technology. Through “virtual field trips” to museums and locations around the globe. A variety of techniques, materials, artists, and subject matter, with the opportunity to explore what interests them. In a choice-based art classroom, students are the artists. They have ownership, make decisions, problem solve, collaborate and learn to persevere. Students create a virtual art gallery to showcase their work.



STUDENT AMBASSADOR PROGRAM

The Student Ambassador Program gives current students the opportunity to be leaders in the school and represent LOGOS to prospective parents during Open Houses and Admission Tours, to prospective students while they shadow classes and other visitors throughout the year. Students who share a desire and ability to promote LOGOS are encouraged to apply.

- Student Ambassador responsibilities include:
- Assist Admissions Department with school tours
- Meet with prospective students
- Student shadow experience
- Participate in all trainings



TWO WAYS STUDENTS COME TO LOGOS

Private Pay

- 2019-2020 LOGOS School Tuition: \$32,220*
- Financial aid available
 - Variable Tuition
 - FAST Financial Aid
 - Tuition Payment Plan
 - 529 Plan
 - Smart Tuition

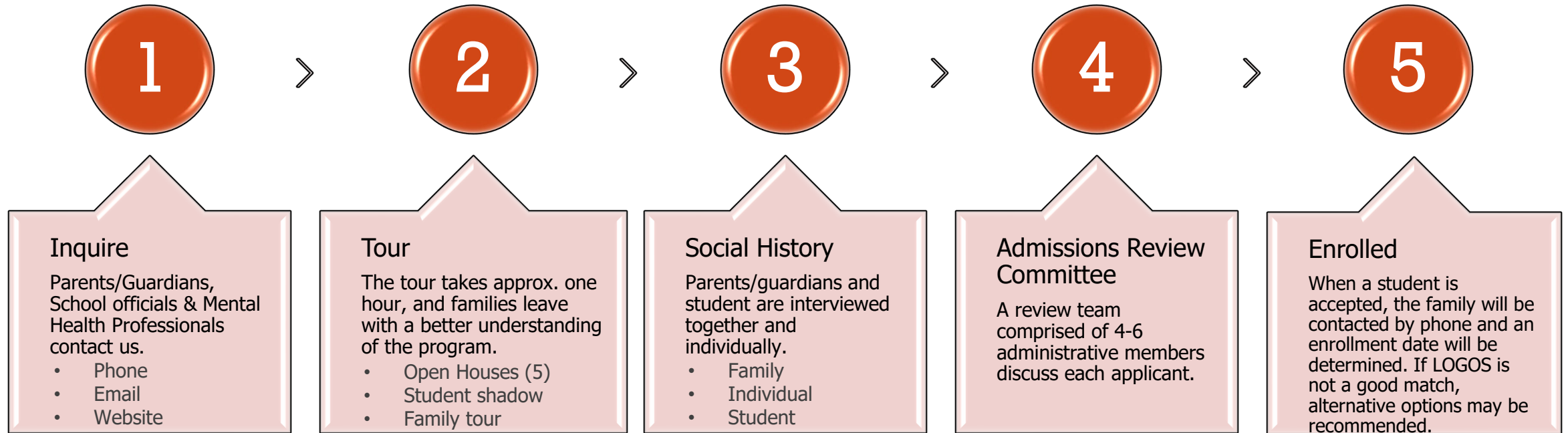
Purchase of Service (POS)

- IEP Process – Change of placement by home school district
 - Tuition & transportation fees covered
- 18 School districts

Tuition includes:

- 11-month school year
- Daily breakfast and lunch
- Field trip expenses
- Athletic team expenses
- Technology fees
- Science lab fees
- Art fees
- Access to therapeutic sensory room

OUR ADMISSIONS PROCESS



LOGOS School is the region's leading independent, therapeutic middle and high school with expert teachers and therapists dedicated to helping students find hope, healing and a promising future.

LOGOS IS UNIQUE...

■ ACADEMICS

- Individualized Instruction
- 6:1 teacher/student ratio
- 3:1 staff/student ratio
- MS & HS experience
- Informal & formal graduations
- National Honors Society

PARENTAL INVOLVEMENT

- Transition services
- ACT Assistance
- Employment
- Post-secondary education
- Independent living

THERAPEUTICS

- Relationship-based community
- Individual & student group therapy
- 13 licensed therapists on staff
- Student Support Intervention
- Student Technology & Support Team
- Engagement/ Outreach Team
- Crisis Intervention



QUESTIONS?



Please contact:

Stephanie Kolker

skolker@logosschool.org

